

VH-KKS

PA34-200T S/n. 34-7570066
LOAD SYSTEM DMA-355 Issue 1

FLIGHT No.	DATE.
FROM.	TO.
CAPTAIN.	

THE OWNER/OPERATOR OF **VH-KKS** IS HEREBY AUTHORIZED TO REPRODUCE LOAD SYSTEM **DMA-355 Issue 1** PROVIDED THAT IT IS REPRODUCED WITH OUT ANY ALTERATIONS WHATSOEVER (HOWEVER IT MAY BE INCLUDED ON OPERATORS MANIFEST ETC.) BUT MUST NOT BE USED FOR ANY OTHER AIRCRAFT FOR SAFETY & COPYRIGHT REASONS.
THE COPYRIGHT REMAINS THE PROPERTY OF D. MACARTHUR & ASSOCIATES
APPROVED 15-11-2004

D. J. MacArthur
AQ45

COPYRIGHT ©
D. J. MACARTHUR
11 PARADISE COURT,
CLONTARF
QUEENSLAND
AUSTRALIA 4019
PHONE: (07) 3283 3817
FAX: (07) 3319 6171
MOBILE: 0439 328 338

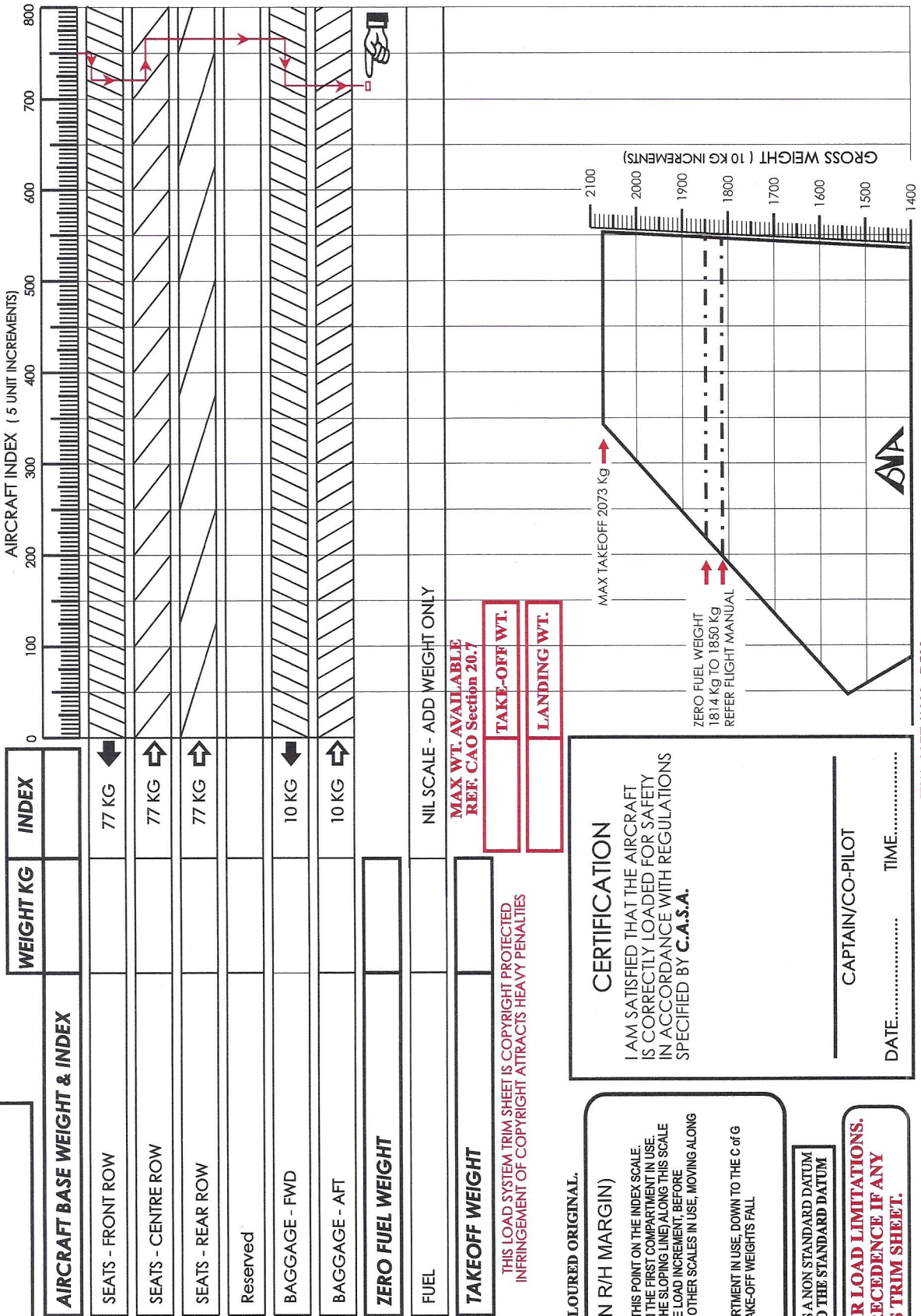
FLIGHT MANUAL COPY MUST BE COLOURED ORIGINAL.

METHOD OF USE(SEE ON R/H MARGIN)

- OBTAIN THE BASE INDEX & STARTING FROM THIS POINT ON THE INDEX SCALE. DROP A VERTICAL LINE TO THE SLOPING LINE IN THE FIRST COMPARTMENT IN USE. MOVE HORIZONTALLY (DO NOT SLIDE DOWN THE SLOPING LINE) ALONG THIS SCALE IN THE INDICATED DIRECTION FOR THE APPROPRIATE LOAD INCREMENT, BEFORE MOVING VERTICALLY DOWN OR TO THE OTHER SCALES IN USE, MOVING ALONG EACH SCALE IN THE SAME MANNER.
- DRAW A VERTICAL LINE FROM THE LAST COMPARTMENT IN USE, DOWN TO THE C of G ENVELOPE AND CHECK THAT THE ZERO FUEL AND TAKE-OFF WEIGHTS FALL WITHIN THE ENVELOPE LIMITS.

NOTE: THIS TRIM SHEET INCORPORATES A NON STANDARD DATUM
DO NOT USE DATA RELATING TO THE STANDARD DATUM

**REFER TO FLIGHT MANUAL FOR LOAD LIMITATIONS.
FLIGHT MANUAL TAKES PRECEDENCE IF ANY
VARIANCE WITH THIS TRIM SHEET.**



SAMPLE METHOD OF USE STARTING FROM AN INDEX OF 750

CERTIFICATION

I AM SATISFIED THAT THE AIRCRAFT IS CORRECTLY LOADED FOR SAFETY IN ACCORDANCE WITH REGULATIONS SPECIFIED BY C.A.S.A.

DATE..... TIME.....

CAPTAIN/CO-PILOT

W(A-2377)/1000 P500